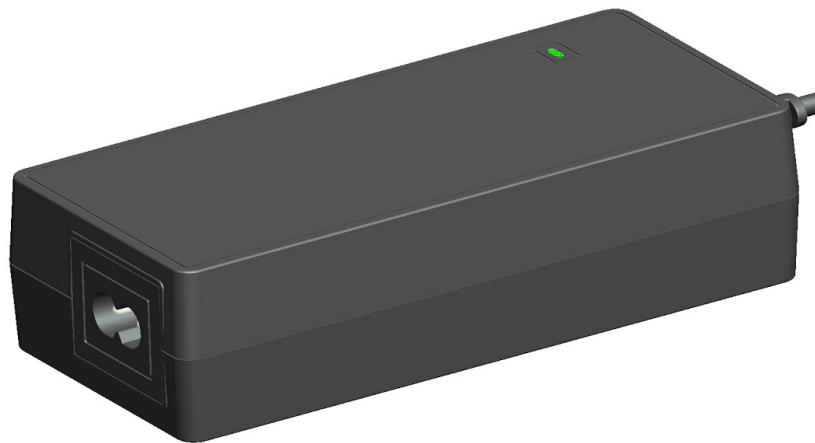


# DATA SHEET NBS100B

Desktop 2-pin AC adapter 80-100W



---

## SUMMARY

Latest generation switch mode power supply (SMPS) designed by NetBit for the latest CPE and POE product applications for high volume deployment in North America and Europe.

## USER BENEFITS

- Compact size – designed to maximise shipping efficiency and reduce total transportation costs
- High efficiency – optimized to meet latest energy efficiency standards for lower total power consumption
- CPE & POE ready – built to meet and exceed the operating requirements for all CPE & POE applications and installations
- Reliable – engineered to high standards to give a long and reliable service for operators and end users

## APPLICATIONS

- Advanced STBs, DVRs/PVRs, home media servers
- Advanced data routers and gateways: DSL, DOCSIS 3.0/3.1, 10G
- Smart/connected AV devices, smart audio speakers/sound bars

## AC INPUT

Rated input voltage: 100-120 / 100-240 / 200-240VAC  
Operating range: 90-135 / 90-264 / 195-264VAC  
Desktop: C8, C6, C14 optional  
Inrush current: <120A  
No load power consumption:  $\leq 0.21W$

## DC OUTPUT

Output voltage current: 0.05-7.5A, 100W max  
Output voltage: 12-13V, 18-20V, 23-25V or 52-56V  
Load/line regulation:  $\pm 5\%$   
OVP: custom  
OCP: 200%  
Hold-up time:  $\geq 20ms$   
Turn on delay:  $< 3s$   
Overshoot / undershoot:  $\leq 10\%$   
Audible noise:  $< 25dBA$  at 600mm  
Ripple:  $< 1\%$  of  $V_o$

## OPERATIONAL

Operating temperature range:  $-5 - 40^{\circ}C$   
Altitude: 0 – 5,000m operational, 0 – 12,000m non-op  
Humidity: 0 – 95% operational and non-op

## MECHANICALS

Color: black  
DC plug size: custom  
DC cable length: custom  
LED: optional

## RELIABILITY

MTBF:  $> 500,000$  hours per Telcordia SR332  
E-Cap lifetime:  $> 5$  years @  $25^{\circ}C$ , 100% load  
Derating standard: IPC-9592B Class I

## REGULATORY COMPLIANCE

EMI: FCC part 15 Class B  
ESD: EN 61000-4-2 15kV air / 8kV contact  
Surge immunity: EN 61000-4-5 1kV

## SHIPPING & PACKAGING

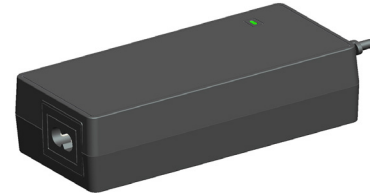
Approx. weight: 328g  
Carton quantity: 36pcs  
Pallet quantity: 1,728pcs  
Full container load 20'GP: 17,280pcs

## CERTIFICATIONS

Safety: IEC 62368-1, UL, CE  
EMI: EN 55032, FCC  
Efficiency: 88% minimum  
Environmental: RoHS compliant

## CASE DIMENSIONS

Desktop  
Width: 64mm  
Height: 35mm  
Length: 139mm



## OPTIONAL CPE ENHANCEMENTS

This PSU design can be customized to meet the exact needs of your application or design including and not limited to:

- Customized output voltage
- Customized transient peak power
- Custom labelling or branding

Please contact our sales team to discuss your exact needs.

For more information on NetBit products, please visit our website - [www.netbit.com](http://www.netbit.com)